



Versatile, Efficient, Cost-effective Comprehensive Foot Pressure Analysis System

- 3 Scan Types: Static, Dynamic and Postural
- Superior visual analysis and interpretation of scans
- Immediate data storage and report generation
- Comparative capabilities
- Highly reliable, portable system

Fields of application include: Podiatry, Orthotics & Prosthetics, Orthopaedics, Rehabilitation, Diabetes, Sports Medicine, Physical Therapy, Chiropractics & Occupational Therapy...



FU KANG HEALTHCARE SUPPLY PTE LTD
402 Orchard Road #04-06 Delfi Orchard (S238876)
CRN:200700049M FAX:67250691
SINGAPORE: sales@fukanghealthcare.com
HONG KONG: sales06@fukanghealthcare.com
WEBSITE: <http://www.fukanghealthcare.com>

Versatile, Efficient, Cost-effective Comprehensive Foot Pressure Analysis System

The Podotech Elftman utilises state of the art pressure mat technology and electronic sensors to provide extensive analysis options. Superior visual analysis encourages patient interaction and facilitates a more accurate assessment. Quick and easy to use, the Podotech Elftman is an essential tool when working in any fast-paced clinical environment.

Why choose the Podotech Elftman?

- Captures 100 images per second
- Matrix homogeneity provided by 1600 equally-measuring sensors
- Thin pressure mat encourages natural gait
- Sensor life time of over 1 million uses
- Highly durable, permanent mat surface
- CE certification provides quality assurance
- No product calibration required
- Can be walked on with and without footwear

Benefits for your Clinic:

- User-friendly software guides you through patient consultations
- Visual impact reinforces patient education and orthotic recommendation
- Immediate analysis and interpretation of data via comprehensive reports
- Achieve better CAD/CAM foot orthotic outcomes by combining the Elftman image at design stage
- Enables comparisons with a patient's previous scan or ideal mechanics
- Generates PDF and Bitmap files for computerised records
- Highly sensitive mat enables analysis of children's gait and posture
- Lightweight, portable and easy to store where space is limited

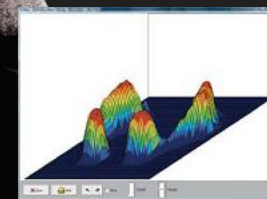


Static Scan:

- Scan the patient whilst standing to identify plantar pressure distribution
- Valuable when assessing orthotic efficiency and detecting leg length discrepancies
- Extensive analysis options in 2D and 3D and numerous measuring possibilities
- Produces annotatable reports that can be saved and emailed in PDF format



Static mapping



3D visualization



FU KANG HEALTHCARE SUPPLY PTE LTD
402 Orchard Road #04-06 Delfi Orchard (S238876)
CRN:200700049M FAX:67250691
SINGAPORE: sales@fukanghealthcare.com
HONG KONG: sales06@fukanghealthcare.com
WEBSITE: <http://www.fukanghealthcare.com>



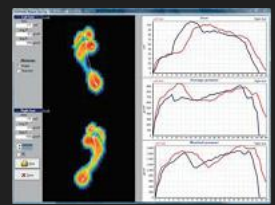
Dynamic Scan:

- Assess the foot in motion whilst walking or running
- Video mode allows frame by frame viewing
- Gait line display, calculations and curves
- Actual size print capacity



Postural Scan:

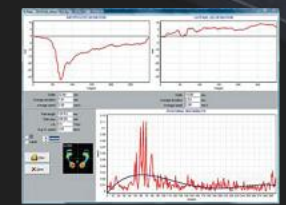
- Identifies deviations in the musculoskeletal balance
- Visually observe postural movement over time
- Centre of pressure displacement (with zoom) (Positioner available as an optional extra)



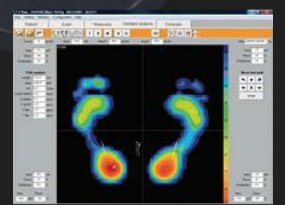
2 foot superposition



2 foot dynamic



Detailed posturographic analysis



Stadiometry mapping



FU KANG HEALTHCARE SUPPLY PTE LTD
 402 Orchard Road #04-06 Delfi Orchard (S238876)
 CRN:200700049M FAX:67250691
 SINGAPORE: sales@fukanghealthcare.com
 HONG KONG: sales06@fukanghealthcare.com
 WEBSITE: <http://www.fukanghealthcare.com>

Technical Specification:

Size (L x W)	610 x 580 mm
Thickness	10 mm
Active Sensor Area	400 x 400 mm
Weight	6.6 kg
Sensor Type	Resistive
Number of Sensors	1600 (40 x 40 mm)
Sensor Size	10 x 10 mm
Sensor Lifetime	> 1,000,000 actuations
Sensor Thickness	4 mm
Acquisition Frequency	100 pictures/second, 100 Hz
No Pressure Resistance	>11M Ω
Temperature Range	From 0 °C to 60 °C
Maximum Pressure	100 N/cm ²
Maximum Load	Up to 250 kg
PC Interface	USB Cable
Power Supply	Powered through USB wire
Required Operating System	Win XP, Win 7, Vista



Podotech Elftman package:

Product code: LM4300

Included in the package:

- Podotech Elftman Pressure Plate
- USB Cable, CD-ROM and Installation Manual

Optional Extras:

Podotech Elftman Aluminium Carrying Case

Product Code: LM4302

Podotech Elftman Positioner

Product Code: LM4304



FU KANG HEALTHCARE SUPPLY PTE LTD
402 Orchard Road #04-06 Delfi Orchard (S238876)
CRN:200700049M FAX:67250691
SINGAPORE: sales@fukanghealthcare.com
HONG KONG: sales06@fukanghealthcare.com
WEBSITE: <http://www.fukanghealthcare.com>



Foot Pressure Platform